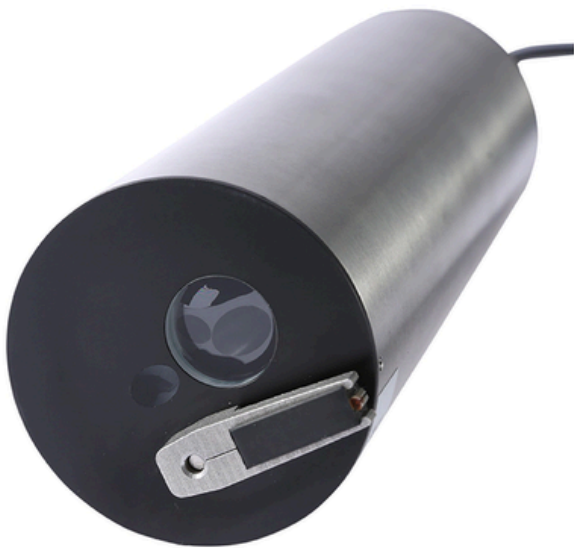


## Wide Ranging Measurement of MLSS

The MLSS probe offers a wide measurement range of up to 50,000 mg/L, making it ideal for monitoring MLSS concentration in aeration basins. Designed for user convenience, it features easy installation, simple operation, a built-in wiper cleaning system, and durable sapphire glass optical windows to ensure long-lasting performance.



## Applications



**Drinking Water**



**Waste Water**

## Benefits

### Wide Range Measurement

- The wide range of 50,000 mg/L measurement as maximum makes it possible to monitor MLSS concentration in the aeration basin.

### Operational Efficiencies

- Rugged and applicable to harsh waste water conditions.
- Long life, continuous data, integratable with MOBUS controllers and SCADA.

### Compliance

- Provides more accurate and repeatable data for enhanced compliance

### Ease of Install & Maintenance

- For user-friendly, MLSS probe is designed for easy installation and simple operation.
- Automatic wiper for hands free cleaning and reduced need for maintenance.
- The optical windows are made of hard-to scratch sapphire glass to ensure durability.

<b>Model</b>	TS-Mx(E)
<b>Measuring Range</b>	0–50000 mg/L (kaolin)
<b>Power Supply Voltage</b>	100–240VAC $\pm$ 10% 50/60 Hz
<b>Power Supply Consumption</b>	Normal: 15 VA max, During cleaning: 22 VA max.
<b>Repeatability</b>	3% of reading or 300 mg/L, whichever is greater (kaolin/20°C)
<b>Output</b>	Signal output (analog 4–20 mA, resistance load of 300 $\Omega$ max.) Self-checking relay output (non-voltage C-contact capacity 240 VAC, 1 A resistance load) Alarm relay output (non-voltage C-contact capacity 240 VAC, 1 A resistance)
<b>Display Resolutions</b>	10 mg/L
<b>Alarm Timer</b>	1 to 120 min. (adjustable)
<b>Calibration</b>	Distilled Water